

NAREIT  
PRESENTATION

JUNE 2025



RLJ has a diversified, urban-centric portfolio with unique growth catalysts, a lean operating model, and a favorable capital structure.

**HIGH-QUALITY  
PORTFOLIO****High-quality portfolio with an attractive growth profile**

- Urban-centric portfolio positioned to capture all segments of demand
- Urban markets represent over two-thirds of RLJ's portfolio
- High margin portfolio generates significant free cash flow

**INTERNAL  
GROWTH****Phase I and II initiatives to generate \$14M to \$18M of incremental EBITDA**

- Six completed conversions in ramp-up, achieved 14% y/y RevPAR growth in Q1 2025
- Conversions in Nashville and downtown Pittsburgh in 2025
- Wyndham Boston Beacon Hill conversion to commence in 2026

**EXTERNAL  
GROWTH****Ability to execute all-cash transactions**

- Provides an advantage in a tight lending environment
- Acquired Hotel Teatro in Denver for \$35.5M in June 2024

**BALANCE  
SHEET****Strong balance sheet with a proven track record of returning capital**

- Repurchased \$24.3M of shares YTD through May 2, 2025
- Over \$0.9B of liquidity provided optionality
- No near term debt maturities

# OPERATING PERFORMANCE



THE PIERSIDE SANTA MONICA

## RLJ's urban-centric portfolio achieved robust RevPAR growth in Q1 led by urban markets

### Exceeded our Q1 Outlook due to strong ADR growth and cost controls

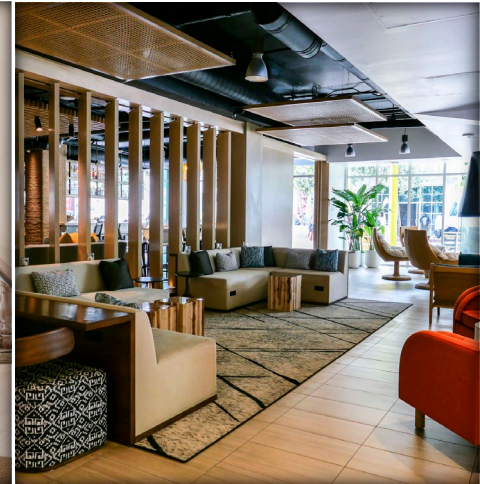
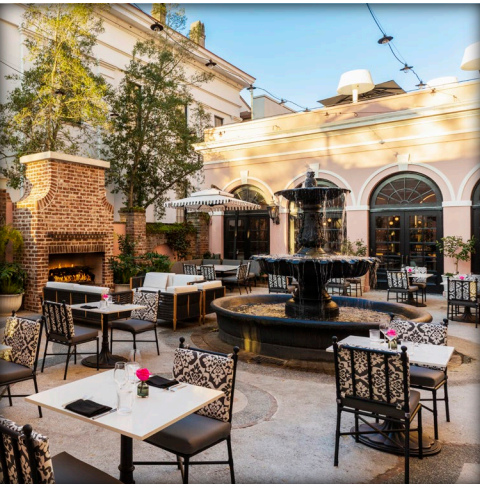
- 1.6% RevPAR growth, led by ADR growth of 2.1%
- Urban hotels (two-thirds of portfolio) achieved 3.6% RevPAR growth
- Adjusted EBTIDA exceeded the high end of our forecast
- Operating expenses grew 2.9%

### Successfully executed on several strategic initiatives

- Sold one non-core asset at an attractive 18x forward multiple and recycled proceeds into share repurchases
- Addressed all 2025 debt maturities
- Advanced conversions in Nashville and Pittsburgh and continued ramping our six completed conversions

### Q2 Outlook

- Q2 Adjusted EBITDA expected to be in the range of \$98.0M to \$101.0M



URBAN CENTRIC PORTFOLIO  
ORGANIC GROWTH

INITIAL CONVERSIONS /  
ACQUISITIONS

FUTURE  
PIPELINE OF CONVERSIONS

BALANCE SHEET  
OPTIONALITY



- Multiple demand drivers
- Capture new normal
- Limited new supply
- Next leg of recovery



- Pacing ahead of underwriting
- External growth from high-growth markets
- Additional growth to stabilization



- Targeting two conversions per year
- Executing incremental revenue enhancement opportunities



- Strong Liquidity
- Generate significant free cash flow
- Optionality to drive external / internal growth
- Demonstrated ability to return capital to shareholders

# HIGH-QUALITY PORTFOLIO



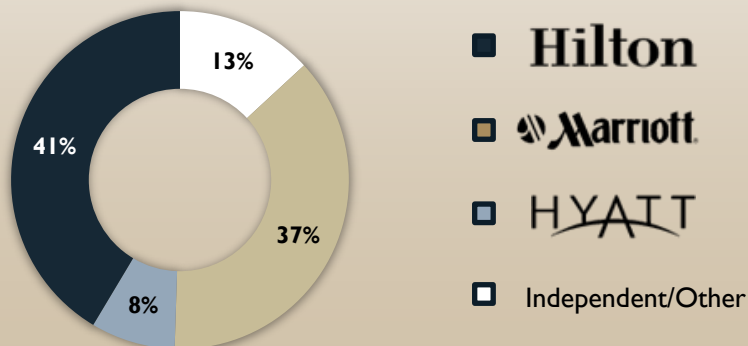
MOXY DENVER CHERRY CREEK

RLJ owns a geographically diversified portfolio of premium branded, high-margin hotels

Portfolio Overview<sup>(1)</sup>

Hotels	94
Rooms	20,982
ADR	\$205
RevPAR	\$151
EBITDA/Key	\$20k

Brand Exposure<sup>(1)</sup>



(1) Based on TTM pro forma EBITDA for the portfolio owned as of March 31, 2025; excludes Chateau LeMoyné which is unconsolidated



URBAN LIFESTYLE

URBAN GATEWAY

RESORT

URBAN METRO

**33**  
# of HOTELS

**39%**  
of EBITDA

**\$21K**  
EBITDA / KEY

**32**  
# of HOTELS

**36%**  
of EBITDA

**\$22K**  
EBITDA / KEY

**11**  
# of HOTELS

**14%**  
of EBITDA

**\$25K**  
EBITDA / KEY

**18**  
# of HOTELS

**11%**  
of EBITDA

**\$16K**  
EBITDA / KEY

Based on FY 2019 EBITDA pro forma for the portfolio owned as of December 31, 2024; excludes Chateau LeMoyne which is unconsolidated

# URBAN LIFESTYLE

PROPERTIES IN TOP URBAN SUBMARKETS THAT BENEFIT FROM SEVEN-DAY-A-WEEK DEMAND AND “BLEISURE” WITH HIGH LEISURE MIX

39% OF EBITDA<sup>(1)</sup>



*(1) Based on FY 2019 EBITDA pro forma for the portfolio owned as of March 31, 2025; excludes Chateau LeMoine which is unconsolidated*

# URBAN GATEWAY

PROPERTIES LOCATED IN TOP HOTEL MARKETS IN THE U.S., THAT ARE ALSO THE NATION'S KEY ECONOMIC CENTERS

36% OF EBITDA<sup>(1)</sup>



<sup>(1)</sup> Based on FY 2019 EBITDA, pro forma for the portfolio owned as of March 31, 2025; excludes Chateau LeMoyné which is unconsolidated

# RESORT

PROPERTIES LOCATED IN RESORT DESTINATIONS WITH A HIGH LEISURE MIX

14% OF EBITDA<sup>(1)</sup>



ZACHARI DUNES ON MANDALAY BEACH-HOTEL & RESORT



THE PIERSIDE AT SANTA MONICA



HILTON CABANA MIAMI BEACH



EMBASSY SUITES DEERFIELD BEACH RESORT



DOUBLETREE GRAND KEY RESORT



FAIRFIELD INN & SUITES KEY WEST

<sup>(1)</sup> Based on FY 2019 EBITDA pro forma for the portfolio owned as of March 31, 2025; excludes Chateau LeMoyné which is unconsolidated

# URBAN METRO

PROPERTIES LOCATED IN NICHE SUBMARKETS WITHIN MAJOR U.S. HOTEL MARKETS

11% OF EBITDA<sup>(1)</sup>



HYATT HOUSE SANTA CLARA



EMBASSY SUITES MINNEAPOLIS AIRPORT

MARRIOTT CHICAGO MIDWAY



EMBASSY SUITES DALLAS LOVE FIELD

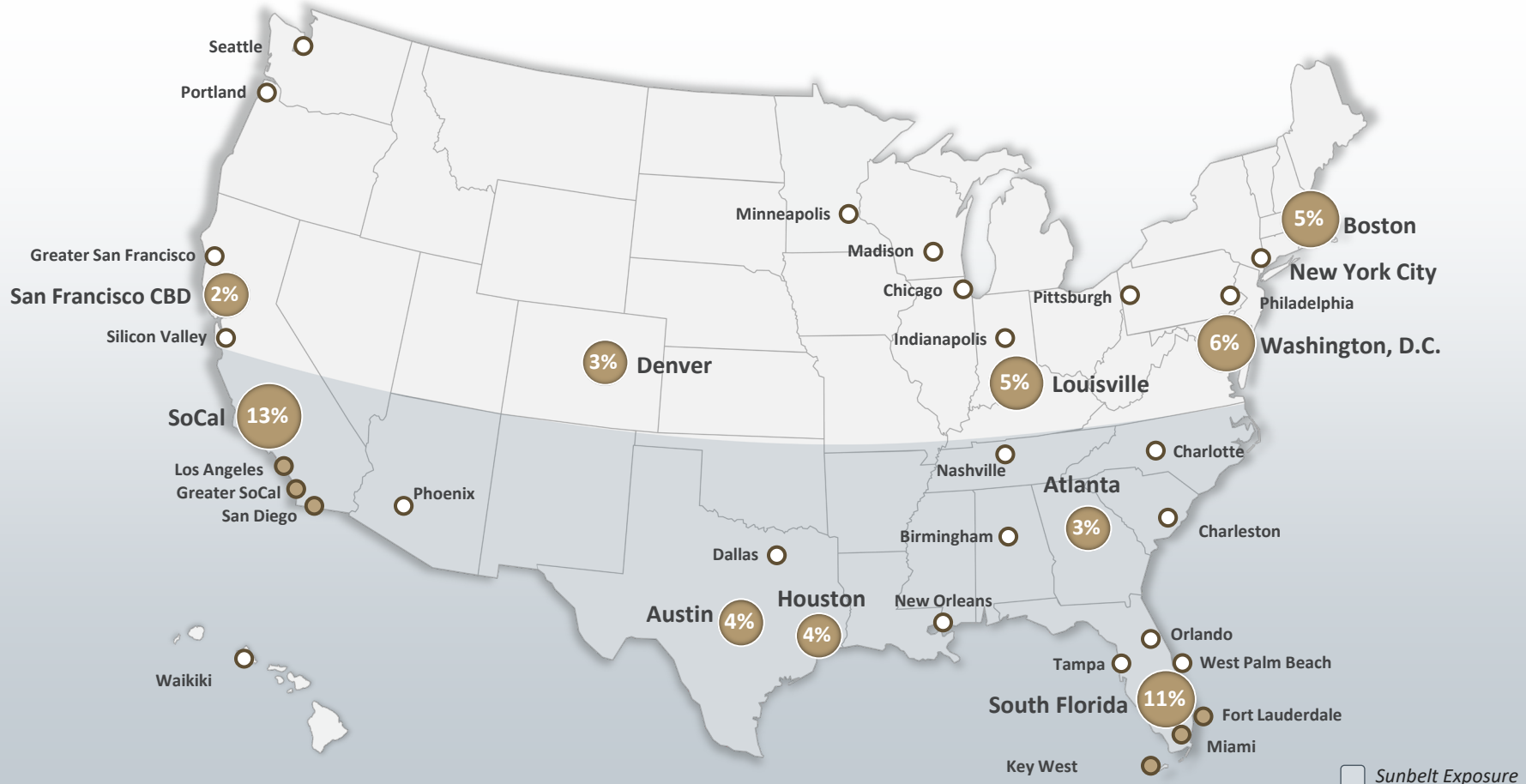


HYATT PLACE MADISON DOWNTOWN

<sup>(1)</sup> Based on FY 2019 EBITDA pro forma for the portfolio owned as of March 31, 2025; excludes Chateau LeMoyné which is unconsolidated

RLJ's footprint in top Urban markets is well-positioned to capture recovery in all segments

- Sunbelt markets represent +50% of RLJ's Hotel EBITDA<sup>(1)</sup>
- Over 2/3<sup>rds</sup> of RLJ's portfolio is concentrated in Urban markets <sup>(1)</sup>



# EXTERNAL GROWTH CATALYSTS



MOXY DENVER CHERRY CREEK

RLJ acquired the Hotel Teatro Downtown Denver in May 2024 for \$35.5M



**Rooms-Oriented**

- 110-room, boutique lifestyle hotel in the Denver CBD



**High Margins**

- ~32% stabilized margins



**High Growth Market**

- Colorado is one of the fastest growing lodging markets, driven by tech and life science firms, venture capital, and population growth



**Heart of Demand Location**

- Seven-day-a-week demand market serving leisure and business travelers
- Heart of Denver CBD location, in close proximity to key attractions such as the recently expanded Colorado Convention Center.
- Denver voters recently approved a \$570M downtown development plan



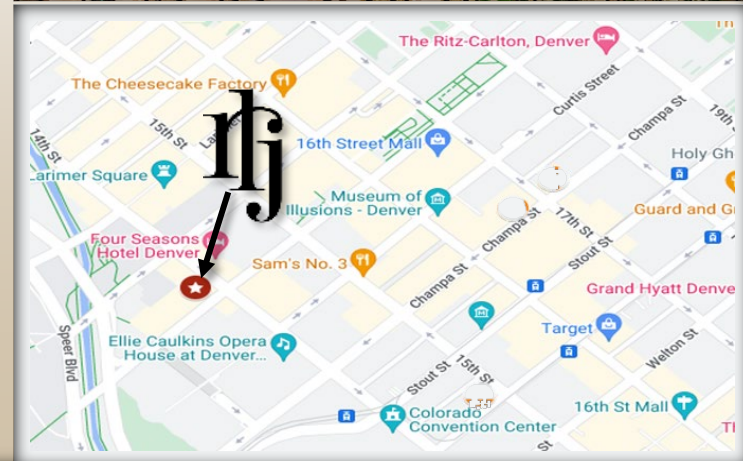
**Strong RevPAR**

- Strategic positioning captures above market occupancy and rate
- Nation leading RevPAR growth of +8.4% from 2009 - 2019



**Unlocked Embedded Value**

- Installed Sage as the new property manager, unlocking significant efficiencies and revenue growth opportunities



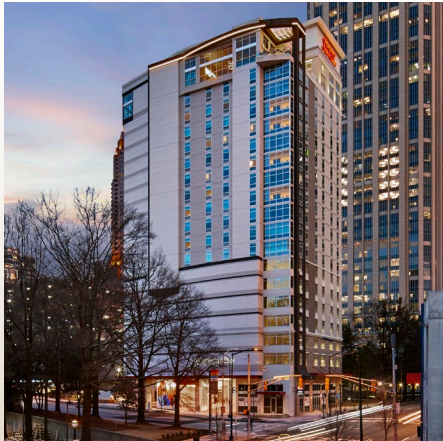
**~32%**  
Stabilized Margins

**\$323,000**  
Price Per Key

**\$223**  
Stabilized RevPAR

Since 2021, RLJ has accretively deployed capital into a number of high-quality acquisitions in top growth markets

## HAMPTON INN & SUITES ATLANTA MIDTOWN



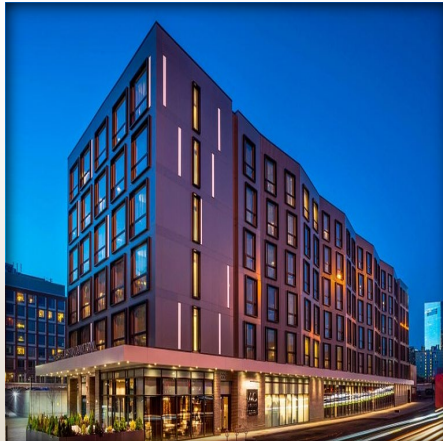
**186**  
KEYS

**\$150**  
STABILIZED  
REVPAR

**2021**  
YEAR  
ACQUIRED

**~7.5 - 8.0%**  
STABILIZED  
NOI YIELD

## AC HOTEL BOSTON DOWNTOWN



**205**  
KEYS

**\$200**  
STABILIZED  
REVPAR

**2021**  
YEAR  
ACQUIRED

**~7.5 - 8.0%**  
STABILIZED  
NOI YIELD

## MOXY DENVER CHERRY CREEK



**170**  
KEYS

**\$170**  
STABILIZED  
REVPAR

**2022**  
YEAR  
ACQUIRED

**~8.0 - 8.5%**  
STABILIZED  
NOI YIELD

## THE BANKER'S ALLEY HOTEL NASHVILLE



**124**  
KEYS

**\$260**  
STABILIZED  
REVPAR

**2022**  
YEAR  
ACQUIRED

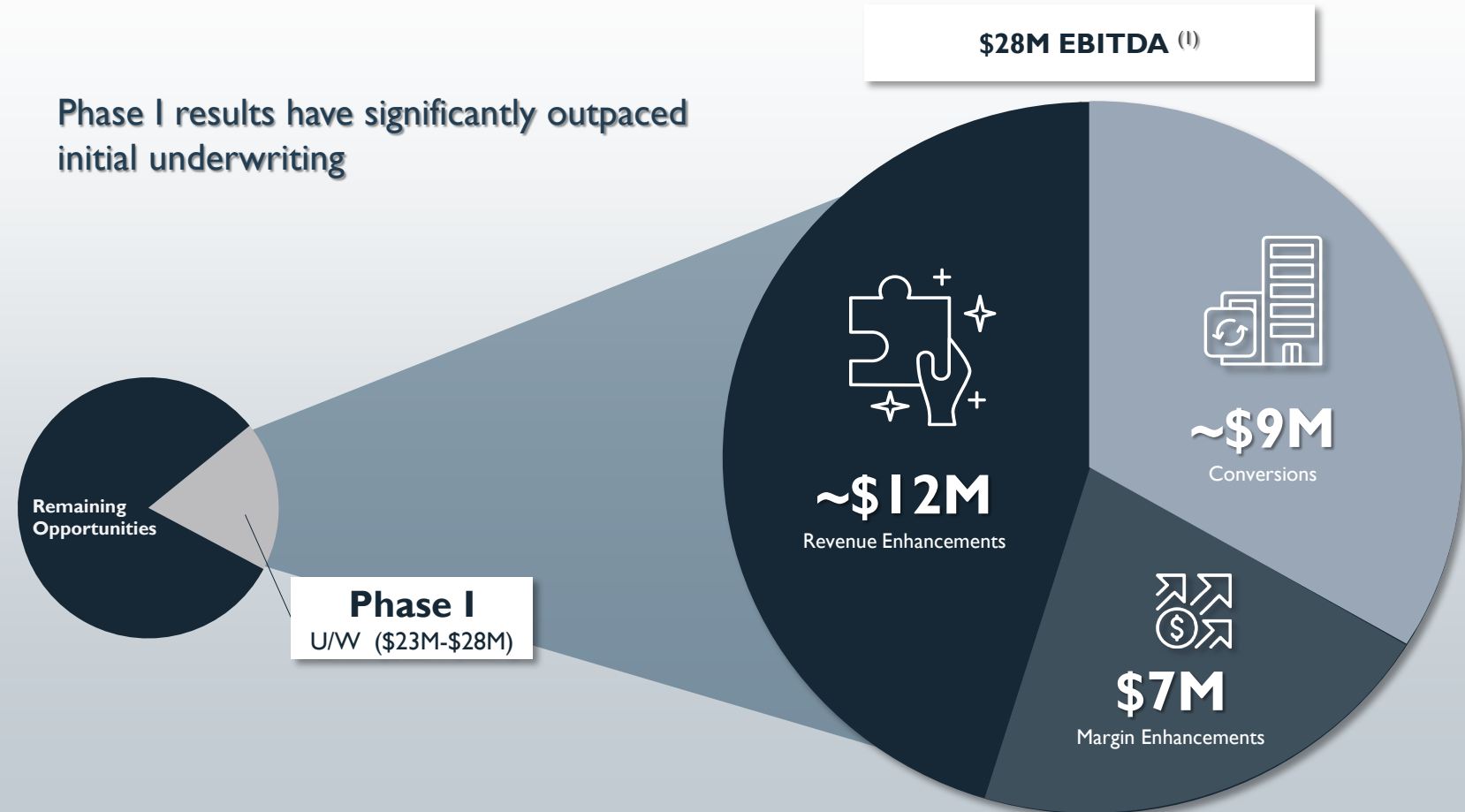
**~8.0 - 8.5%**  
STABILIZED  
NOI YIELD

# INTERNAL GROWTH CATALYSTS



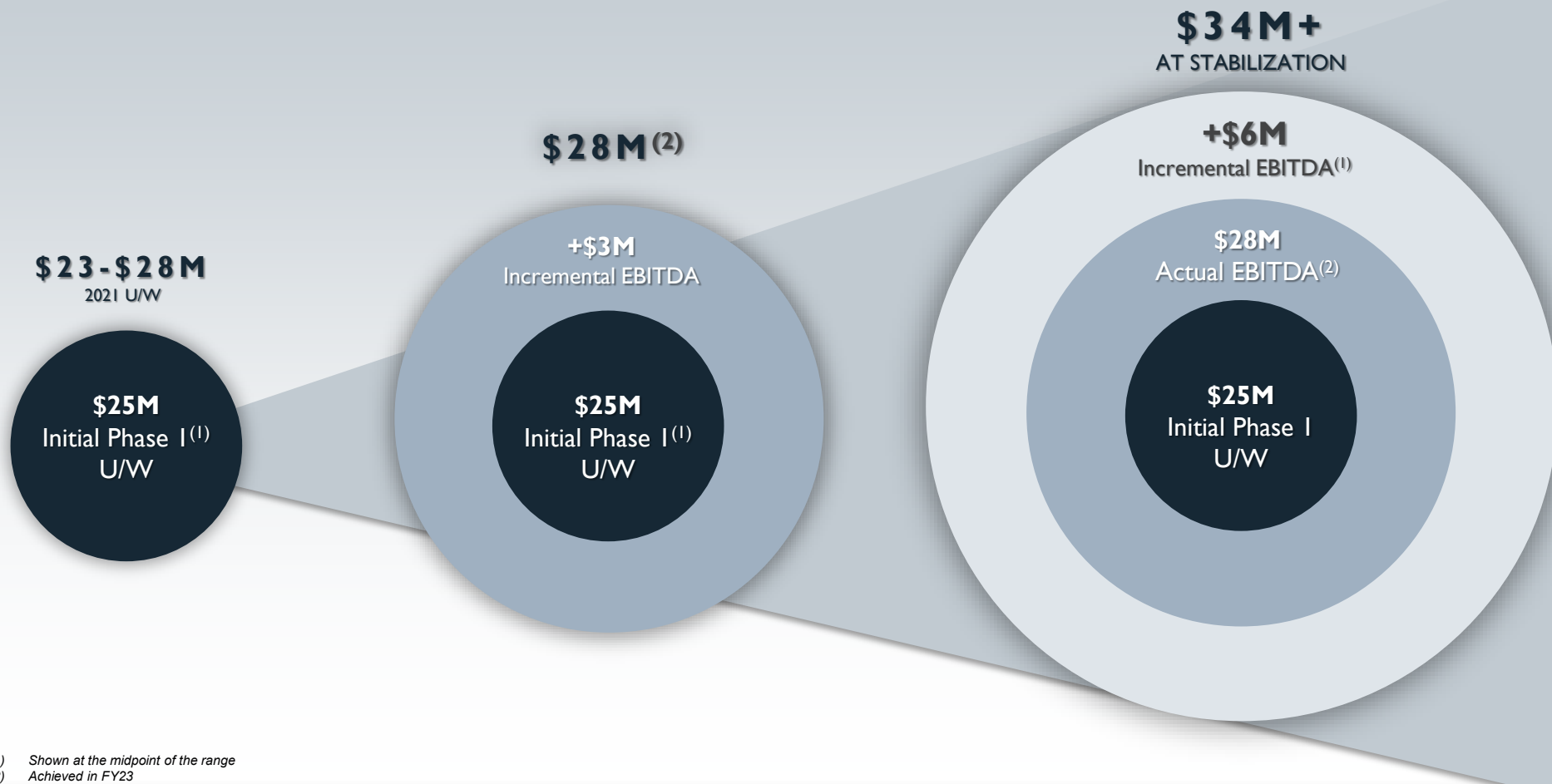
THE SURFING FOX AT THE PIERSIDE

Initial Phase of opportunities only represents a fraction of the total portfolio of opportunities



(1) Achieved in FY23

Phase I Value Creation Initiatives are exceeding the top-end of initial underwriting with room for stabilized EBITDA to grow by an incremental \$6M+



The 2023 conversions are at or nearing completion and poised to significantly exceed initial underwriting



**HOTEL TONNELLE NEW ORLEANS - COMPLETE**

- New Orleans is a top leisure, drive-to market with the hotel located in the heart of the Historic Garden District
- Repositioning as a Tribute Portfolio Hotel, joining Marriott's family of independent boutique hotels to allow for capturing higher rated Bonvoy guests

**+\$25-\$30  
ADR Lift<sup>(1)</sup>**



**DOUBLETREE HOUSTON MEDICAL CENTER - COMPLETE**

- Hotel located across from the Texas Medical Center - home to 60 medical institutions, as one of the largest medical complexes in the world
- Rebranding captures significant lift in ADR, already in the market, as well as higher rated Hilton rewards members

**+\$5M-\$6M  
Incremental EBITDA<sup>(1)</sup>**



**BANKERS ALLEY HOTEL NASHVILLE – ON TRACK**

- Nashville is a strong growth market with a diversified economy benefiting from existing and emerging corporate expansions/relocation
- Opportunity to capture higher rated rewards members and drive market share by joining Hilton's Tapestry Collection

**~50%+  
Unlevered IRR<sup>(1)</sup>**

*(1) Annual, upon stabilization based on underwriting*

Announced two conversion in Pittsburgh in 2024

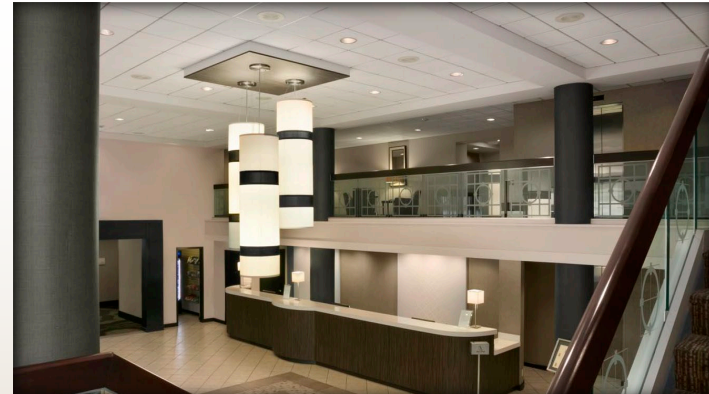
- Completed the conversion of the Courtyard in Q4 – ahead of schedule



**AUTOGRAPH PITTSBURGH DOWNTOWN – ON TRACK**

*Conversion from Renaissance Pittsburgh Hotel*

- Iconic building in prime CBD location
- Autograph Collection expected to capture higher ADR
- On track for delivery in 2025



**COURTYARD AT THE UNIVERSITY OF PITTSBURGH - COMPLETE**

*Conversion from Wyndham Pittsburgh University Center*

- Benefits from multiple demand drivers given prime location on university campus
- Courtyard affiliation expected to capture higher ADR
- Completed in Q4, ahead of schedule

**+\$15-\$20  
ADR Lift<sup>(1)</sup>**

**+\$2M-\$3M  
Incremental EBITDA<sup>(1)</sup>**

**~50%  
Unlevered IRR<sup>(1)</sup>**

(1) Annual, upon stabilization based on underwriting

Executed on a number of high return ROI projects to increase out-of-room spend by reimagining and optimizing non-revenue generating space



## EMBASSY SUITES DEERFIELD BEACH RESORT

- Re-imagined indoor / outdoor oceanfront bar to drive out-of-room spend
- Added new sundries market, providing a new profit center
- Completed comprehensive renovation of all suites

## EMBASSY SUITES LOS ANGELES INTERNATIONAL AIRPORT (LAX) SOUTH

- Created multi-functional social and small group meeting space as part of a transformational lobby renovation



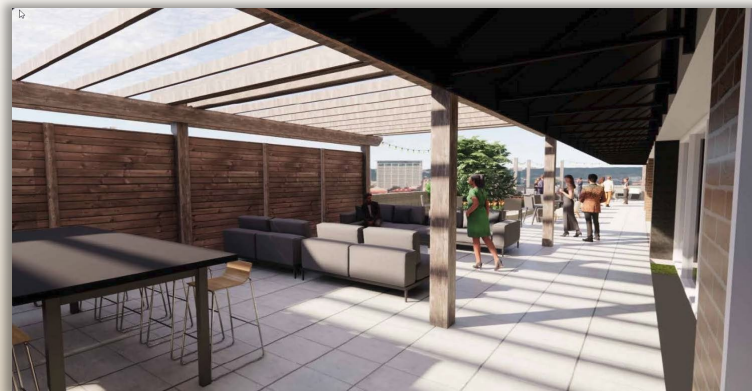


## DOUBLETREE SUITES BY HILTON HOTEL AUSTIN

- Added new guestrooms and suites
- Activated the lobby bar, elevating guest experience

## RESIDENCE INN BETHESDA DOWNTOWN

- Created new rooftop bar with city views
- Added a new “Grab & Go” market as a profit center

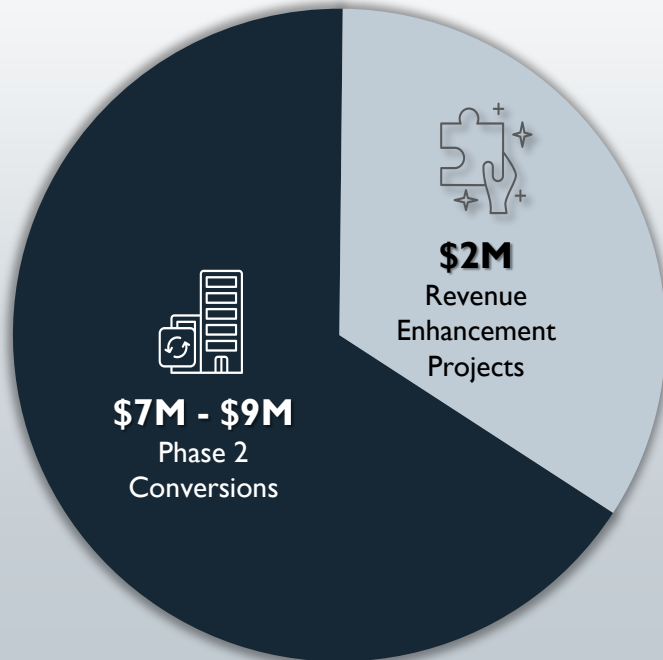


## DOUBLETREE SUITES BY HILTON ORLANDO AT DISNEY

- Reimagined lobby to incorporate a new market and expand bar as profit centers
- Enhanced restaurant / bar and elevated public spaces

In addition to conversions, Phase 2 value creation will also benefit from \$2M in incremental EBITDA from ROI projects

Phase 2 Value Creation:  
**Expected +\$9M - \$11M**  
Of Incremental EBITDA



ZACHARI DUNES MANDALAY BEACH

## RLJ is well positioned for continued value creation through incremental conversions and value-add opportunities



- Brand expirations
- Conversions with renovations
- Embedded real estate value creation potential in 'Opportunity' assets
- Incremental ROI opportunities

- Remix customer base
- Drive higher ADR
- Gain Market Share

Incremental 10-to-15 conversion and value-add opportunities in portfolio

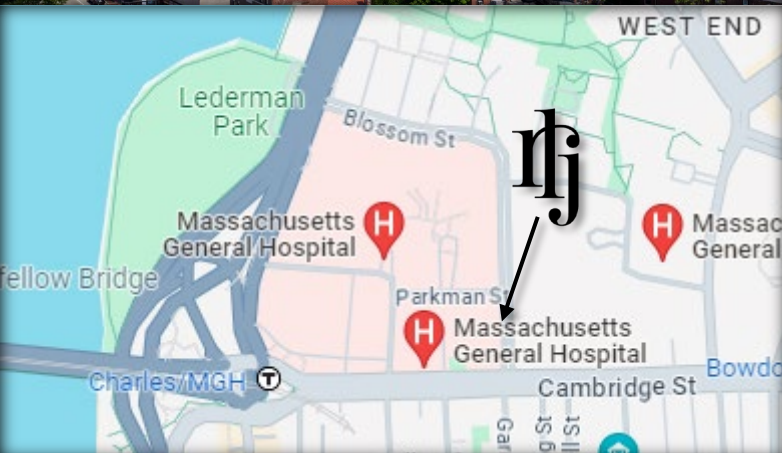


*Expect to execute two incremental conversions per year*

RLJ acquired the fee-simple ownership of the Wyndham Boston Beacon Hill in January of 2024



- Pulls forward an additional compelling conversion opportunity with significant upside potential
- Boston represents a top hotel market with a favorable growth outlook for the next several years
- Recent transaction in the market at \$875k / key
- Property's A+ location within Boston's Beacon Hill neighborhood, surrounded by Massachusetts General Hospital which is currently undergoing a \$1.8 billion expansion



**8.5x**

Multiple on  
Acquisition Price<sup>1</sup>

**\$411,000**

Price Per Key

**>40%**

EBITDA Upside

(1) Based on post-conversion stabilized EBITDA. Conversion capital expected to add 1.5x to multiple

STRONG  
LIQUIDITY  
& BALANCE  
SHEET



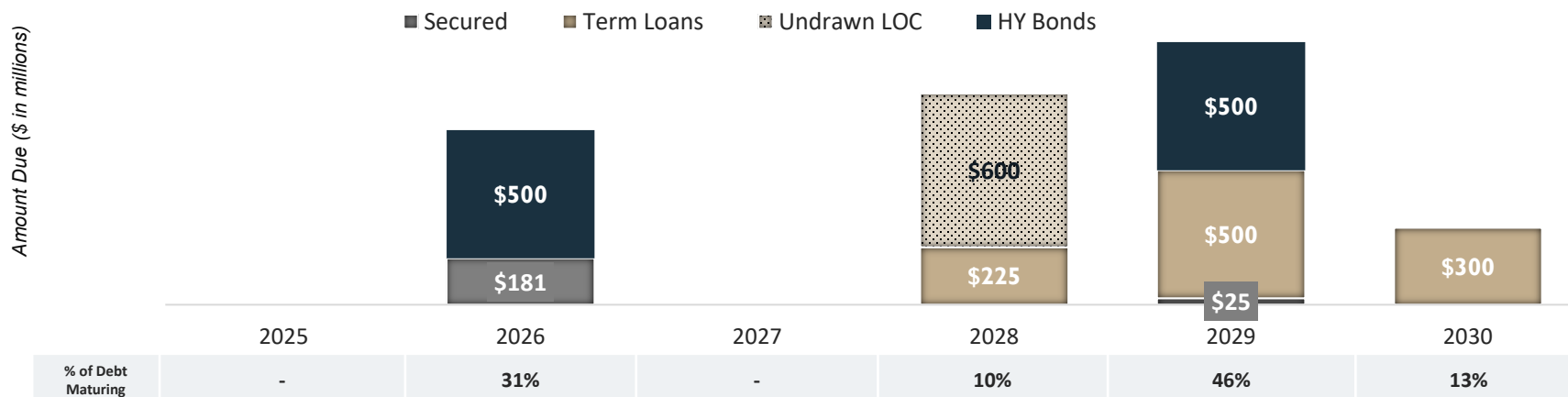
MARRIOTT LOUISVILLE DOWNTOWN

## RLJ has a strong balance sheet and well-staggered debt maturity profile

### Best-in-class balance sheet <sup>(1)</sup>

- Over \$0.9B of liquidity, including \$600M availability on LOC
  - No debt maturing until 2026
  - Weighted average interest rate of 4.5%
- Recycled non-core disposition proceeds into share repurchases
  - Repurchased 2.7 million shares for \$24.3 million year-to-date

### Debt Maturity Schedule



(1) As of May 2, 2025

RLJ has a diversified, urban-centric portfolio with unique growth catalysts, a lean operating model, and a favorable capital structure.

**HIGH-QUALITY  
PORTFOLIO****High-quality portfolio with an attractive growth profile**

- Urban-centric portfolio positioned to capture all segments of demand
- Urban markets represent over two-thirds of RLJ's portfolio
- High margin portfolio generates significant free cash flow

**INTERNAL  
GROWTH****Phase I and II initiatives to generate \$14M to \$18M of incremental EBITDA**

- Six completed conversions in ramp-up, achieved 14% y/y RevPAR growth in Q1 2025
- Conversions in Nashville and downtown Pittsburgh in 2025
- Wyndham Boston Beacon Hill conversion to commence in 2026

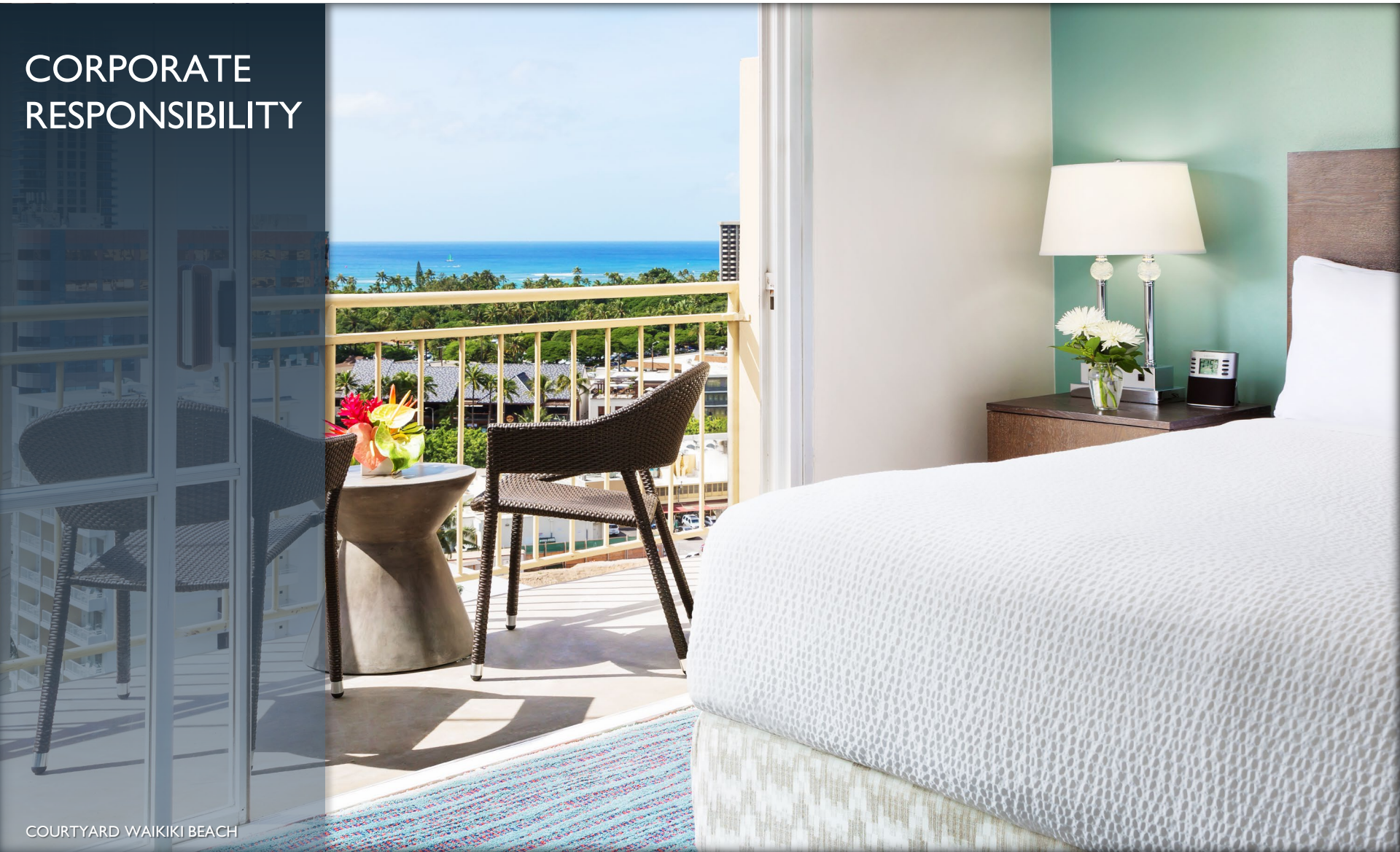
**EXTERNAL  
GROWTH****Ability to execute all-cash transactions**

- Provides an advantage in a tight lending environment
- Acquired Hotel Teatro in Denver for \$35.5M in June 2024

**BALANCE  
SHEET****Strong balance sheet with a proven track record of returning capital**

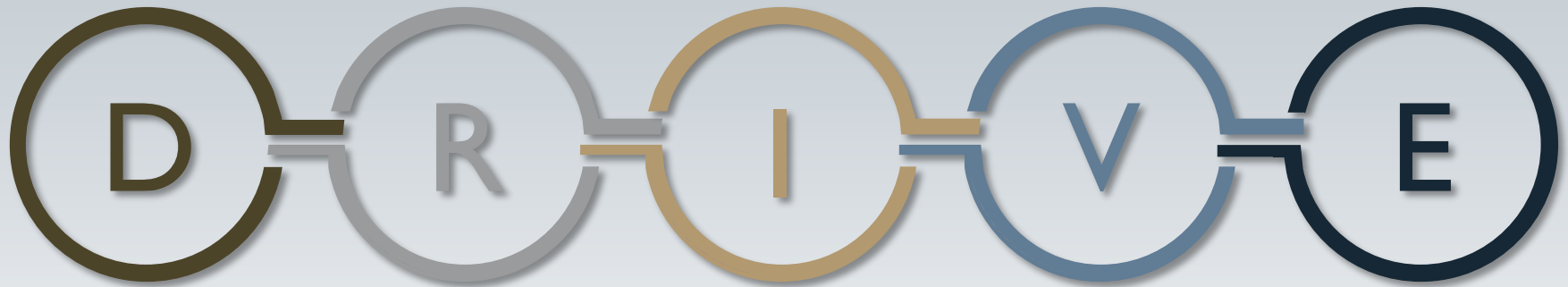
- Repurchased \$24.3M of shares YTD through May 2, 2025
- Over \$0.9B of liquidity provided optionality
- No near term debt maturities

# CORPORATE RESPONSIBILITY



COURTYARD WAIKIKI BEACH

Our sustainability strategy aligns our ESG objectives with our commitment to generate long-term stakeholder value



**Drive**

revenue growth by following a disciplined investment strategy and through aggressive asset management

**Reduce**

cost through investments in energy and water conservation and other “greening” efforts

**Improve**

our human capital by championing our corporate culture of diversity and inclusivity, to boost motivation, attract top talent and retain associates

**Validate**

our sustainability commitments through external benchmarking and transparent reporting

**Expand**

our engagement with our partners, suppliers and the communities in which we operate

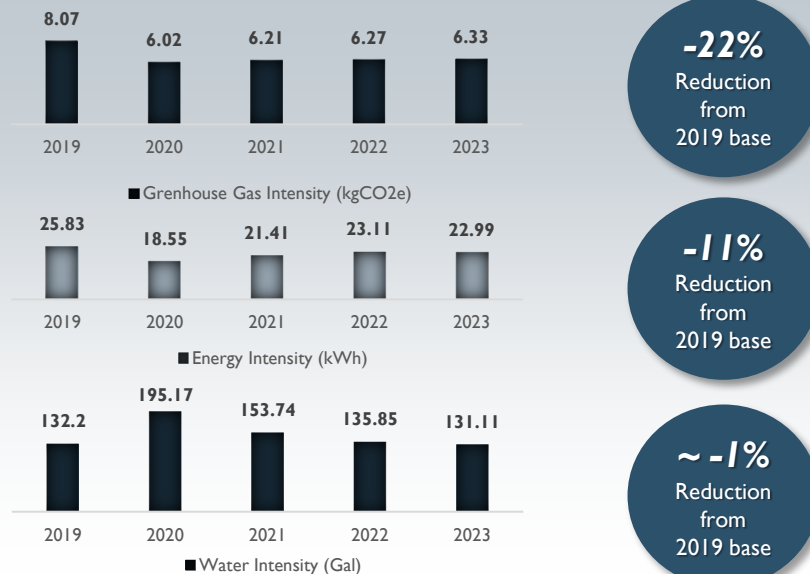
Our sustainability strategy aligns our ESG objectives with our commitment to generate long-term stakeholder value



In recognition of the strategic importance of increasing environmental efficiency we...

- Achieved cost reductions through investment in energy, carbon and water efficiency projects across our portfolio
- Routinely track asset efficiency profile to monitor progress and identify opportunities for continued cost and energy reductions

- 100% of our properties have undergone an energy efficiency assessment in the past three years
- 76% of our properties utilize an environmental management system, while 73% have low-flow toilets, faucets, or showerheads
- 62% of properties have installed bulk dispensers or non-plastic alternatives to replace mini toiletries



Our sustainability strategy aligns our ESG objectives with our commitment to generate long-term stakeholder value

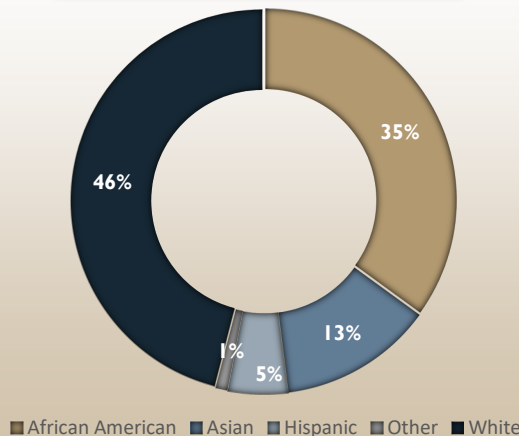


Our commitment and leadership on social responsibility continues with...

- Supporting communities through inclusive labor practices, policies and philanthropic volunteer and donation programs that encourage a culture of generosity and community engagement
- Maintaining a diverse and inclusive culture at all levels of our organization from associate to board membership

- 56% of trustees are ethnically diverse, with 33% female
- Over half of RLJ’s corporate employees are ethnically diverse, with 49% female
- RLJ is active in social contribution with over \$4 million in donations

Associate Ethnicity



PARTNERSHIPS



Our sustainability strategy aligns our ESG objectives with our commitment to generate long-term stakeholder value



We are strengthening our approach to governance by...

- Maintaining transparency with investors on our strategic approach to ESG performance
- Having formed a Corporate Responsibility Committee, reporting to the Board of Trustees

- Maintain a highly diverse and independent Board, and committed to continuing refreshment
  - 7 of 9 trustees are independent, including all members of our Board Committees
  - 3 of 9 trustees are women
  - 5 of 9 trustees are ethnically diverse
  - Trustee skills, qualifications and experience matrix are disclosed in proxy statements
- Robust Code of Business Conduct and Ethics to consistently guide and set our ethical standards across our Company
- Robust policy development centered around ethics and risk mitigation

*In 2024, RLJ submitted its inaugural GRESB report, allowing the company to benchmark our ESG progress with the GRESB framework*



- Continued alignment with United Nations Sustainable Development Goals



*This information contains certain statements, other than purely historical information, including estimates, projections, statements relating to the Company's business plans, objectives and expected operating results, and the assumptions upon which those statements are based, that are "forward looking statements" within the meaning of the Private Securities Litigation Reform Act of 1995, Section 27A of the Securities Act of 1933, as amended, and Section 21E of the Securities Exchange Act of 1934, as amended. These forward-looking statements generally are identified by the use of the words "believe," "project," "expect," "anticipate," "estimate," "plan," "may," "will," "will continue," "intend," "should," "may," or similar expressions. Although the Company believes that the expectations reflected in such forward-looking statements are based upon reasonable assumptions, beliefs and expectations, such forward-looking statements are not predictions of future events or guarantees of future performance and our actual results could differ materially from those set forth in the forward-looking statements. Except as required by law, the Company undertakes no obligation to update or revise publicly any forward-looking statements, whether as a result of new information, future events or otherwise. The Company cautions investors not to place undue reliance on these forward-looking statements and urges investors to carefully review the disclosures the Company makes concerning risks and uncertainties in the sections entitled "Risk Factors," "Forward-Looking Statements," and "Management's Discussion and Analysis of Financial Condition and Results of Operations" in the Company's Annual Report on Form 10-K for the year ended December 31, 2024, which will be filed on February 26, 2025, as well as risks, uncertainties and other factors discussed in other documents filed by the Company with the Securities and Exchange Commission.*